



Prospectus / 2019

The Best of Both Worlds



Federation of
Drama
Schools

Contents

03. Welcome

04. Why GSA?

06. GSA Family

08. Performances & Productions

10. Facilities

12. Auditions & Interviews

14. Student/Alumni focus

16. Accommodation

18. Location

Programmes at GSA

Foundation

21. Foundation Acting

22. Foundation Musical Theatre

Undergraduate

24. BA (Hons) Acting

26. BA (Hons) Actor Musician

28. BA (Hons) Dance

30. BA (Hons) Musical Theatre

32. BA (Hons) Theatre
(Conversion course by distance learning)

34. BA (Hons) Theatre & Performance

36. BA (Hons) Theatre Production

Postgraduate

38. MA Acting

39. MFA Acting

40. MA Musical Theatre

41. MFA Musical Theatre

42. MA Stage & Production
Management

44. MA Theatre

46. Student/Alumni focus

Research at GSA

48. Research

48. PhD Dance

49. PhD Theatre

Short Courses at GSA

51. Pre-audition courses

53. Saturday School

53. Summer Conservatoire

54. Stage Combat

55. Vocal Confidence

58. Campus map

Welcome from Head of GSA

Guildford School of Acting (GSA) is the conservatoire of the University of Surrey. Established in 1935, it is one of the UK's premier institutions, delivering world class actor training and cutting edge performance research. As a member of the Federation of Drama Schools, GSA enjoys a national and international profile as a centre of excellence in professional arts training and education. We have recently been awarded Gold in the Teaching Excellence Framework (TEF) and ranked second amongst the UK's top conservatoires for student satisfaction in the National Student Survey 2018 with an overall score of 94%.

As the conservatoire of the University of Surrey, GSA is a creative and innovative learning and research community. The student experience is at the centre of our pursuit of artistic and intellectual excellence.

Commitment, curiosity, courage and generosity are constantly required of students. GSA's training and education produces accomplished actors, performers, actor musicians, dancers,

theatre and performance makers, stage managers, theatre technicians, directors, choreographers and musical theatre creators. At GSA, students are encouraged to collaborate, innovate and experiment, through reflection and exploration of the social, political and cultural challenges of the contemporary world.

If you are inspired by the potential of what GSA can offer on our foundation, undergraduate and postgraduate programmes: we look forward to welcoming you to GSA at an Open Day, Applicant Day, Audition Day or at one of our productions.

Above all, GSA believes in the power and potential of the arts to transform society and culture. We encourage each student to take full advantage of the opportunities that await them, to meet the challenges of pursuing fulfilling and successful careers, by not merely seeking to make a living, but also, to make a difference.

We hope you will want to be one of them.

Sean McNamara
Head of GSA



Why GSA?



Institutional Reputation

Established in 1935

The GSA brand name gives our students immediate visibility in the entertainment industry and a reputation for quality and professionalism. We're passionate about constantly upholding and developing this reputation, ensuring our students have the technical skills they need whilst also encouraging them to develop their artistic integrity, entrepreneurship and creativity to succeed as artists today and in the future.

World Class Facilities

Consistent investment across campus

As part of the University of Surrey, GSA facilities rank amongst some of the best professional training facilities in the UK Conservatoire sector. These include the £4.5million 220 seat Bellairs Theatre and 80 seat Rex Doyle Studio Theatre; student accommodation; the Library and Learning Centre which has seen investment of £16million over the last 5 years; and access to the £36million Surrey Sports Park.



Training Excellence

Ranked second for student satisfaction in national Student Survey 2018 amongst UK conservatoires

Guildford School of Acting received a score of 94% for overall student satisfaction in the 2018 National Student Survey, placing us second amongst the UK's top conservatoires. Our BA Acting programme has consistently scored 100% student satisfaction and BA Musical Theatre achieved 94% student satisfaction in 2018.

Our rigorous process of training and development is proven to develop versatile, dynamic performers whose attention to detail, professionalism and talent gives GSA graduates an unrivalled reputation and employment record across the creative industries.

Innovative Research

Diverse research centres

Our research, which encompasses both traditional and practice-based forms, addresses performance in history and contemporary culture. It ranges from performance philosophy to global Shakespeare, and includes work in transnationalism and dance; immersive, interactive and durational theatres; trauma and crisis in performance; disability arts; performance and the nonhuman, and costume and scenography. As a university conservatoire, we benefit from a close relationship between scholarship, performer training and professional practice. Our research centres include The Centre for Performance Philosophy, The Centre for Performance and Urban Living, The Surrey Shakespeare Centre and The Labanarium.

Teaching Excellence

Industry leading staff and visiting professionals

Students at GSA are taught by leading West End directors, casting agents, lighting directors, experienced professionals and leading academics, giving our students a comprehensive support network and knowledge base they can utilise pre and post graduation.

GSA Family

Whether you're joining GSA on one of our foundation or degree programmes, taking part in our part-time classes or attending one of our performances, the energy and passion of being part of the GSA community is undeniable. Through our collaborative approaches to learning and teaching and the extensive support network available to students both personally and professionally we hope that you'll be inspired and proud to be part of the family. At GSA our staff, students and alumni come from all over the world. Our diverse student cohort and global focus are core elements of life at GSA.



Alumni focus



Persia Babayan-Taylor

Actor Musician graduate

I chose to come to GSA as it is one of the only schools that provide an 'Actor Musician' course and it is one of the best drama schools in the country. My main passion was Acting but music had always played a huge part in my life, I didn't want a career as a solo musician but loved the idea of integrating my musical skills into performance and theatre. That was a very exciting prospect.

"The audition process was also one of the most beneficial ones I did. The panel had time for me and really wanted to listen and see what I was capable of."

I'd encourage applicants to make sure they are fully prepared. Everyone feels nervous at the audition so you want to be incredibly comfortable with all your material to make the experience as enjoyable as possible!

I enjoy our showings and when we get to perform to the whole school and see their reaction. Hearing music always puts a smile on people's faces. We have beautiful studios which are brilliant spaces to work in. Our tutors are incredibly professional and knowledgeable and every session is beneficial to our progression as performers.

In first year I lived in Millennium House on the University campus. It was lovely to connect with non-GSA students and have time to unwind in a comfortable flat! All accommodation is in close proximity to the library and shops which is great.

I will always remember the guidance given by the tutors. I feel like they will always be there for support should we need it.

"Since joining GSA I have a more confident and positive outlook on my future prospects as a performer."

I now look at these possibilities less nervously and with more excitement about what is to come.



Ned Porteous

Currently appearing as Joseph Tate in Emmerdale

Out of the drama schools I had auditioned for, GSA seemed to have this overwhelmingly warm and welcoming vibe that I just didn't find anywhere else. I had heard good things from both colleagues and mentors. It just clicked for me the day of my audition that this was where I'd like to spend the next three years of my life.

GSA has such a strong sense of community and family and one of my happiest memories of GSA would have to be the end of the first term, after completing our 'story telling' block. You really got to sit back and think, these are my colleagues now, this is my company, let's get to work!

I really felt like GSA wanted to prepare me as much possible for the industry by giving me both dance and singing lessons. Everything seemed to work hand in hand with each other - what I learned in one group singing class I could easily apply to my Shakespearian methodology.

Whilst at GSA I gained the ability to forgive myself as a performer which really took the edge off and gave me much more room to develop.

I'd advise GSA students to throw yourself completely into every lesson and every activity – you will get out what you put in. It's also important to learn, very quickly the ancient art of patience! And most importantly, give yourself a break... this is a marathon, not a sprint.

“

I really felt like GSA wanted to prepare me as much possible for the industry by giving me both dance and singing lessons.

”

Performances & Productions

At GSA we pride ourselves in delivering performances and productions to the highest professional standards, showcasing the skill and talent of our students.

It's also important that our students have the opportunity to work with external directors, introducing them to the realities of industry practice.

Information on performances, productions and booking can be found on our website: gsauk.org



Facilities

Teaching space

Students at GSA have access to purpose-built studios and tutorial rooms within the GSA building and across the University campus.

Performance space

Productions are staged in the 220 seat Bellairs Theatre, 80 seat Rex Doyle Studio Theatre as well as in theatres and venues in and around Guildford and London, giving students the opportunity to experience a wide range of professional performance environments. These external venues include the renowned Yvonne Arnaud Theatre, The Mill Studio and The Electric Theatre in Guildford, and various venues in London's West End including the Shaftesbury Theatre, The Criterion Theatre and the Soho Theatre.

GSA is situated on the University of Surrey's beautiful campus offering students state of the art, purpose built facilities within a lively University environment just ten minutes' walk from Guildford town centre and only 34 minutes' walk from Central London by train.





Production facilities

Production facilities at GSA include a state-of-the-art 100Gb optical fibre network fitted throughout the Ivy Arts Centre; a fully automated flying system in the Bellairs Theatre; cutting-edge robotic cameras and professional-grade video production equipment for live streaming; bespoke GDS prompt desk and wireless comms; high-end computer workstations (on both Mac OS & Windows) with dedicated lighting, Sound and Video software packages; and a fully-equipped construction workshop and wardrobe department with extensive stock of period and modern costumes.

The GSA sound and lighting departments emulates professional environments in terms of production values. Our sound stock includes: Yamaha and Digico sound desks; a wide range of PA including, Inspired Audio, D&B, JBL, and Meyer; Sennheiser and Shure radio equipment; industry standard microphones including DPAs for our musical theatre shows, and a large range of Shure, Neumann, AKG and DPA instrument microphones. Lighting equipment includes ETC and MA consoles on site, as well as close links to other console brands to explore and learn. We have a range of in house stock and also hire a wide variety of intelligent lighting fixtures on a show by show basis. Professional lighting and sound designers regularly design our larger shows alongside student teams.

Everything in one place

GSA is situated on the University of Surrey Stag Hill campus which is home to a wide range of amenities, including a laundrette, a post office, a bank, a bookshop, a health centre and our recently refurbished convenience store, SimplyFresh. There's also a large supermarket nearby, and a weekly food market is held on the Stag Hill campus.

Food and drink

The THEATre coffee shop is situated within the GSA building, serving Starbucks coffee and a selection of hot and cold food.

In addition there are a wide selection of coffee shops and food outlets on the University campus.

Auditions

For those students who are required to audition we try to make the process as enjoyable and constructive as possible. We do not expect you to be an accomplished performer but we are looking for potential and, if we see it, we would like you to feel convinced that GSA is the best place for your training.

The audition process enables us to make informed choices about candidates and their ability to undertake the rigorous training we offer. It gives you the opportunity to see whether this is the right school and training for you, and to demonstrate whether you have the aptitude and ability to sustain a career in the performing arts industry.

What are we looking for?

- A vibrant and energised body and mind
- A healthy body and a healthy voice
- A knowledge of theatre, television and film
- An ability to transform the written text in either song or speech into believable and theatrically truthful words and thought
- An ability to freely use your imagination
- An ability to listen and follow instructions

For more information on the audition process and requirements please refer to the GSA website: gsauk.org

Interviews

Where applicable, interviews provide us with an opportunity to get to know you better, and you with an opportunity to ask questions in a one-to-one setting. We want to know what excites you about performance and why you think performance and its creation are important subjects to explore both critically and practically.

Interviews also give us a chance to envisage how you might participate in academic conversation and critically-engaged practice.

In interviews for Production programmes we are looking for commitment and enthusiasm for a successful career in the entertainment industry.

We also encourage you to question us, and to learn more about what makes your chosen programme tick.

Ultimately, these interviews are intended as a conversation premised on curiosity and an open mind.



“

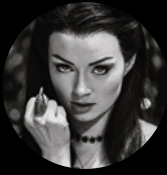
Overall I auditioned at 6 different Schools and I must say that GSA, from the off, made me feel the most welcome. I didn't really feel like I was in an audition because the whole process seemed very relaxed and I seemed to enjoy it more rather than feeling any pressure.

Having a workshop and being able to perform a monologue at my first round audition made me really get a feel for the place, unlike other schools where you would just perform a couple of speeches and then leave. The recall was a lot of fun to, and it really did make me want to gain a place at GSA. When I did I couldn't believe it, in fact, I still can't believe it! I feel privileged to be part of such a great institution.

”

James Bibby
BA (Hons) Acting

Student focus



Christina Bennington

BA (Hons) Musical Theatre, 2013

I'm currently playing the lead role of Raven in Jim Steinman's *Bat Out of Hell* at the Dominion Theatre. Creating this role has been the most exhilarating and overwhelming experience of my career so far. I'm incredibly lucky to have a very solid training behind me that has allowed me to give my absolute best performance 8 shows a week since I graduated.

I attended a GSA Summer Course and fell in love with the school. To me, GSA was a place where I could learn all the skills I needed to succeed as a performer, and also where my unique talents would be celebrated and nurtured. The teachers taught me to have opinions and be valued as a creative brain in a room, something which has proved incredibly valuable

in my journey to becoming a West End leading lady.

The balance between healthy competition and a family atmosphere at GSA is perfect. I was constantly pushed in every discipline, while being equally supported emotionally. It's easy to get the best out of people when everyone is striving for excellence together, as a team effort.

If you choose to audition at GSA it's incredibly important to choose material that shows you off to your strengths. Work out what you find most interesting about yourself and play to it. Be ready to work the hardest in the room, but to also be the nicest. The industry is smaller than you think, and that rings true for colleges also. Break a leg!



George Baker

BA (Hons) Theatre Production, 2017

I am currently Assistant Stage Manager on *Strictly Come Dancing the Musical* at the Piccadilly Theatre.

My decision to pursue Stage Management as a career was made quite late and was a sudden change from my previous university interests. The knowledge that a production won't develop from rehearsals through to its first performance without our team is extremely satisfying. The job satisfaction from working in this industry is incredible and provides endless motivation.

GSA radiated a family atmosphere that I didn't sense at other open days. Support from peers, staff and visitors began on our first day and continues even now we've graduated. On an academic level, a University of Surrey degree is a very beneficial credit to have for life. This is one of the many benefits of being part of a University as opposed to an independent institution, including the financial support, housing and social life that is offered!

I loved working on GSA's productions - the advantage of having a technical theatre course that is supported by external professionals is that the production values are so high. I still look back at production photos now

and I'm reminded how lucky I was to work on drama school shows of such a scale.

My confidence grew at GSA in ways that I didn't expect. I vividly remember being asked to go into a rehearsal room on my first GSA production to cover one of the second-year students and I was so nervous! I find it hilarious now that I was so scared to walk into a room full of people I had never met before and assume a role of leadership because now I don't give it a second thought. I think that is because I've settled into who I am and I have confidence in my ability not only to work professionally but also to be a genuine and friendly person. It's the opportunities GSA gave me that allowed me to develop in this way.

It's important to carefully consider what you want from your training. I wanted to graduate into a musical theatre stage management career with a focus on show calling and I strongly believe that GSA gave me the best possible training and industry exposure for this. Every drama school gives something different, but I do honestly believe that GSA is an incredibly generous, supportive and rare learning environment.



Alexandra Mardell

BA (Hons) Acting, 2015

I currently play Emma Brooker on Coronation Street, ITV. I am also the co-artistic director of JunkBox Theatre Company. The most exciting thing for me in my job is meeting and working with other actors/directors/writers etc. There's always so much to learn from everyone, so many interesting stories.

I always attended dance and drama classes as a child, mainly focussed on musical theatre. But as I got older I wanted to focus on acting for television. For me, the only option was drama school.

When I first visited GSA it felt homely. The other students were so friendly and supportive, rather than competitive as I had witnessed at other schools. We're all in the same boat at the end of the day. My happiest memories at GSA are all with my class mates. Back stage stories, tech day, watching the other class in their showcase. 3 years of working so intensely together, they know you better than

anyone! Although many of my friends and family would disagree, I would say I'm quite shy. Throughout my time at GSA I would often feel as though I couldn't do it. I can't be funny in comedy, can't sing the high note in mix quality, can't write my monologue phonetically. My class mates would always tell me off when I always seemed to manage it in the end. We had such a supportive year group, and over the three years, they helped me to overcome my self-doubt. But I still can't write phonetically! At GSA many of the tutors have taught for years, worked as performers themselves and really care about sharing their knowledge and experience with the students. Although they can seem intimidating in your first year, by the time you graduate, they're your friends!

GSA was the drama school for me! The perfect balance of feeling settled and under pressure! Also, Guildford is lovely!



Cletus Chan

MA Musical Theatre, 2016

I am currently a musical theatre actor and I'm currently making my West End debut in The King and I at the London Palladium

I started musical theatre relatively late, at the age of 15. I always knew I liked performing as I'm also a musician. Since then, I've been taking steps towards my goal and I am so happy to be able to say I'm a professional musical theatre actor!

I chose GSA for its outstanding reputation and its incredible employment rate. It is almost impossible to open any programme without seeing a handful of GSA graduates. I also chose GSA because of its equal emphasis on all three disciplines. I felt that GSA has the most well rounded MA course and does not try to pigeon hole you into a particular discipline. Many schools are known to excel in one or two disciplines, I believe that GSA excels in all three. The sheer intensity of the MA programme at GSA really pushed me to become a better performer. GSA understands that we only have one year and they pack it with as much training as possible. After a year, it really feels like I've received 3 years' worth of training!

One of the happiest moments I've had at GSA was when we first stepped out onto the Shaftsbury stage for our showcase. After training so intensely for a year, my classmates have become a second family. It was very emotional to share a West End stage with them.

GSA has instilled a high level of professionalism and tenacity in me. The industry is so competitive, you have to be a professional and constantly work on honing your craft. The weekly professional development classes really prepared me to enter this competitive industry, giving me the skills and drive to continue despite constant rejection.

If you choose to audition at GSA make sure you are completely prepared for all scenarios you could possibly face. Arrive early, be polite, have a 16 bar, 32 bar and 2 minute cut of your songs, because you never know what curve balls they might throw at you. But most importantly, let your passion shine through. You would be surprised by how far a good personality and good manners can get you!

Accommodation

As part of the University of Surrey GSA offers a wide range of student accommodation. Our rooms are comfortable, secure and priced to suit different budgets – allowing you to focus on your programme and enjoy everything that Surrey has to offer.

Our accommodation is situated on three key sites in Guildford and is arranged in Courts of Residence (groups of self-catered housing), providing you with a comfortable, safe living space to make your own. We group our rooms into a range of price bands, allowing you to give us your preferences based on what you can afford.

On Stag Hill campus you will find our original accommodation close to all the amenities of our largest campus. Meanwhile on the nearby Manor Park campus, a dynamic, car-free student village has been created – with a subsidised bus service – in an area of wonderful natural beauty. Hazel Farm, just two miles from campus, allows us to cater to a range of budgets.

Whether you live at Stag Hill, Manor Park or Hazel Farm, the University's facilities, beautiful open spaces and Guildford's lively town centre are only a short walk or bus ride away.

Full details of our accommodation allocation policy, pricing structure and room layouts can be found at surrey.ac.uk/accommodation





Top location



At GSA we offer the best of both worlds – the benefit of a relaxed campus university set among pretty countryside with the amenities and social life you would expect from the lively town of Guildford and London on the doorstep.

Our friendly, safe community, set in the heart of Surrey, is the perfect home from home, just a ten-minute stroll into town, with a regular bus service running late into the night.

Guildford has some of the best shopping in the region where you'll find all of the high street favourites plus a great choice of independent retailers.

The town boasts over 100 places to eat and drink as well as clubs, pubs and bars.

Guildford is also the perfect base to explore from, adjacent to the A3 main road and on a direct railway line between London Waterloo and Portsmouth. It's also in close proximity to the UK's two largest international airports, Heathrow and Gatwick.

A direct train to London takes just 34 minutes from Guildford so these excellent transport links make a trip to the capital easy to enjoy, whether heading into town for a night out, a West End show or some sightseeing.



Programmes at GSA



Please refer to gsauk.org for the most up to date information regarding the programmes on offer at GSA and fees and funding information.

Foundation

Foundation Acting Foundation Musical Theatre

Why GSA?

The UK's leading conservatoires, within the Federation of Drama Schools (FDS), receive thousands of applications each year for entry onto their performance programmes for as few as 20-30 places. Auditioning for these performance programmes at some of the nation's leading conservatoires is highly competitive. GSA's Foundation programmes in Acting and Musical Theatre, aim to provide students with the basis of the fundamental techniques in Acting, Singing and Dance. Both the Acting and Musical Theatre pathways are focused upon providing an insight into life within a conservatoire and preparing students for the rigours and expectations of conservatoire training and higher education.

Programme overview

The Foundation Acting and Musical Theatre programmes are separate pathways, each with a distinct identity and aims and objectives. The core elements of each programme are calibrated according to the differing requirements of each genre and are constellated around developing and nurturing the potential of each student as a storyteller and artist.

Acting

Various acting techniques and practitioners are studied, including, Stanislavski and Sanford Meisner. Students will develop approaches and techniques to acting and text analysis through the study and practice of scenes in a contemporary play, a classical text, and works related to the Naturalistic and American Realism movements.

Audition Technique

Guidance and preparation for the selection and delivery of contemporary and classical monologues required for auditions onto professional performance programmes. Audition technique is taught in group and one to one sessions.

Skills

A range of skills based classes are delivered within the programme. These will include:

Improvisation / Movement / Dance / Voice / Group Singing / Workshops & Masterclasses

Workshops and masterclasses will be given by faculty from fellow conservatoires and industry professionals.

Showcase

In Semester two, the students will perform in a professionally supported Showcase of work within one of GSA's performance venues.

Acting for Camera

In Semester two, students will undertake an Acting for Camera project, learning the basic camera techniques and skills required for further screen acting training.

The Foundation Acting programme is both an innovative and intensive course led and taught by GSA's highly skilled trained tutors and industry professionals. Graduates of the Foundation Acting programme have been awarded places at; RADA, LAMDA, GSA, East 15, Bristol Old Vic Theatre School, Mountview, Royal Central School of Speech and Drama, Arts Ed, Royal Welsh College of Music & Drama, Birmingham School of Acting, Rose Bruford, Drama Centre, Royal Conservatoire of Scotland, Manchester School of Theatre.

Foundation

Musical Theatre

The Foundation programme in Musical Theatre aims to nurture and develop skills and techniques for those who aspire to training within either a conservatoire or higher education environment in pursuit of a career within the creative industries.

The programme is delivered over two semesters focussing upon the rudiments of the disciplines required of the contemporary musical theatre performer. Throughout each semester, the programme focusses upon the delivery of a diverse and extensive range of subjects around the following core subject areas;

Dance: Jazz, Ballet and Tap

Classes are streamed with GSA BA and MA performance programmes based on ability and knowledge.

Audition Technique

Guidance and preparation for the selection and delivery of contemporary and classical monologues and song repertoire choices required for auditions onto professional performance programmes. Audition technique is taught in group and one to one sessions.

Acting Through Song

Understanding and analysing narrative through conveying truth and circumstance within the context of music and lyrics.

Acting Technique & Text Analysis

Students will develop approaches and techniques to acting and text analysis through the study and practice of contemporary and classical scenes.

Skills

A range of skills based classes are delivered within the programme. These will include:

Voice / Singing / One to one Singing Tutorials / Workshops & Masterclasses

Workshops and masterclasses will be delivered by West End professionals and by faculty members from fellow conservatoires and other training institutions on their courses to ensure students are fully informed about the further training options available to them.

Applications and Personal Statements

Students are offered support and guidance for the submission of applications to conservatoires and higher education institutions.

Showcase

In Semester two, the students will perform in a professionally supported Showcase of work within one of GSA's performance venues.

The Foundation Musical Theatre programme is both an innovative and intensive course for the aspiring musical theatre performer led and taught by GSA's highly skilled and trained tutors and industry professionals.

Graduates of the Foundation Musical Theatre programme have been awarded places at; Arts Ed, Mountview, Royal Central School of Speech and Drama, Trinity Laban Conservatoire, Royal Conservatoire of Scotland, Bird College, GSA, London School of Musical Theatre, Tisch School of the Arts (NYU), Urdang Academy and Laine Theatre Arts.





“

The staff members at GSA are truly inspiring. They really do care about their job and their students. They have a passion to get the best out of each person. I have been lucky enough to work with directors at GSA who have gone above and beyond for their students. The connections and friendships I have made with the students and members of staff are memories I will carry with me forever. It has been an unforgettable experience. I feel very grateful to have met these people and gone through this experience with them all.

”

Eilidh Loan
BA (Hons) Acting

Undergraduate

BA (Hons) Acting

Why GSA?

The training of an actor is an intensive process, which requires curiosity, courage and commitment. At Guildford School of Acting, our philosophy of actor training is founded on the development of the individual and their growth within the practice of the ensemble, helping you to develop your imagination, range, skills and technique.

Programme overview

Drawing primarily on the teaching and practices of Stanislavsky and Lecoq, as well as the work of Mike Alfreds, Uta Hagen, Sanford Meisner and Rudolf Laban. Within the BA Acting programme you will develop a clear set of individual technical skills, from singing to stage combat. Important critical and evaluative skills will then enable you to do the best work possible for stage and screen.

Your imagination will be developed through play, improvisation and scene work. You will also take screen acting

classes, as well as film and radio projects to explore the unique processes needed in the contemporary world of recorded media.

Professional development classes and workshops with industry professionals will allow you to develop your professional network and maximise all employment opportunities and a final showcase presentation in a West End theatre, to invited agents and industry guests, will complete your transition from student to professional performer.



Award

BA (Hons)

UCAS code

W410

Duration

3 Years

Entry requirements for 2020 entry

GCSE English Language and Mathematics at grade C/4 or above (or international equivalent).

CCC at A Level and MMM at BTEC.

Entry is also subject to successful audition. Candidates who can demonstrate exceptional talent, and can satisfy the panel of their ability to complete the programme may also be considered.

A non-refundable audition fee will be charged.

“

Over the last decade or so we have seen a great increase in productions that integrate the skills of the actor with the skills of the musician in performance. Through this programme we aim to produce strong actors and strong performers with excellent skills as ensemble players and musicians. It's an exciting time in the industry to be looking at how the role of the actor-musician can be developed and defined by the students.

”

Nicholas Scrivens

Programme leader

BA (Hons) Actor Musician

Why GSA?

This BA (Hons) Actor Musician programme focusses on developing your combined talents as an actor and a musician. The course sits alongside our internationally recognised performance programmes in Acting and Musical Theatre. This vocational programme of study introduces students to musicianship in performance, acting technique, voice, ballet, tap, jazz and singing.

Programme overview

The Actor Musician programme will help you become a highly disciplined individual and versatile performer.

The first year of study is split over two semesters with the focus on core skills in acting, dance, singing and music. Projects are added across the second year with students working on texts as diverse as Shakespeare, Lloyd Webber, Sondheim, Chekhov and Ibsen. All including the skills of musicianship.

The third year of study is based around three core performance projects: play, a musical and a devised piece. This is alongside a showcase for industry in a London venue. On graduation you will be equipped to work both as an actor and an actor/musician across a range of performance contexts, taking advantage of the growing appetite for versatile performers across the industry.





Award

BA (Hons)

UCAS code

AD29

Duration

3 Years

**Entry requirements
for 2020 entry**

GCSE English Language and Mathematics at grade C/4 or above (or international equivalent), CCC at A Level and MMM at BTEC.

Entry is also subject to successful audition. Candidates who can demonstrate exceptional talent, and can satisfy the panel of their ability to complete the programme may also be considered.

The course does not require a specific grade standard on an instrument. However, your playing and sight-reading ability should be of a high level and your understanding of harmony and music should be advanced.

A non-refundable audition fee will be charged.

“

I recently completed my Professional Training placement at Akram Khan Company - a professional dance company who are known worldwide for producing thoughtful, provocative and ambitious dance productions for the international stage.

”

Amy Sharkey

BA (Hons) Dance

BA (Hons) Dance

Why GSA?

Over 30 years ago the University of Surrey was the first university to set up an academic dance department. Since then, we have continued to build on our reputation as an internationally leading centre for dance practice and research. Our unique degree gives you the opportunity to experience diverse dance practices and to interrogate dance in a contemporary globalised culture.

Programme overview

On our Dance programme you will train in a broad range of contemporary dance practices and gain insight into dance histories and contexts. Our students work as dancers, choreographers, teachers, researchers and leaders.

We teach four dance practices: contemporary, African-based contemporary, Asian-based contemporary and ballet.

You will have the opportunity to join our student-led dance company and work with a resident dance company.

In addition, BA Dance students have the opportunity to take extra-curricular technique classes with fellow GSA students and join the University dance squad which specialises in hip-hop, jazz and modern.



Award

BA (Hons)

UCAS code

PPM3

PPM4

Duration

3 Years

4 Years*

**Entry requirements
for 2020 entry**

GCSE English Language and Mathematics at grade C/4 or above (or international equivalent).

ABB at A level or DDD at BTEC.

Offers are normally made in terms of grades. Suitable candidates will be invited for an audition and/or interview.

* Programme includes Professional Training placement



“

Attending GSA was life changing for me. I was suddenly surrounded by people who felt and thought like me. The staff respected my individuality, but pushed and challenged me to help me achieve my dream of performing in the West End eight shows a week. A total dream come true. GSA developed me into the performer I wanted to be.

”

Jed Berry

*BA Musical Theatre graduate 2017.
Currently in Kinky Boots at Adelphi Theatre*

BA (Hons) Musical Theatre

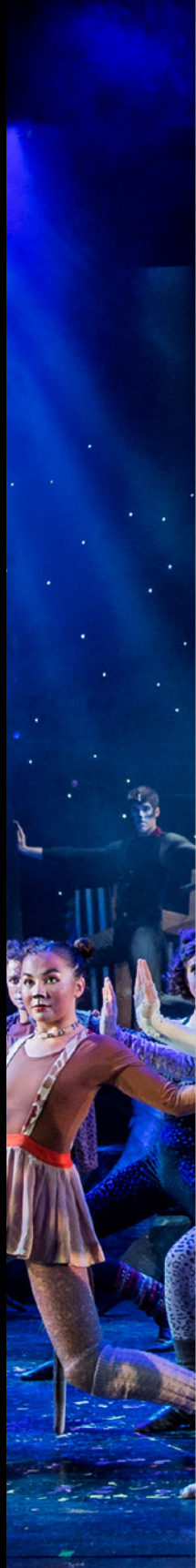
Why GSA?

Guildford School of Acting is arguably one of the world's most successful conservatoires for musical theatre training with alumni appearing in the West End, on Broadway and across the world. Our philosophy is based on your growth as an individual and your development as an artist within a highly disciplined ensemble, who can compete and succeed in all aspects of musical theatre performance.

Programme overview

Our Musical Theatre programme will develop your professional and collaborative sensibilities through a rigorous process of training. You will learn a clear set of individual technical, critical and evaluative skills, with practical classes in the core disciplines of dance, singing and acting. Our programme achieved 94% overall satisfaction in the National Student Survey (NSS) 2018.

Your skills are continually developed through integration exercises, scene work and rehearsal projects and productions of classic and contemporary musicals. Technical tuition in dance, singing and acting enable our performers to become multi-skilled and highly versatile to meet the demands of the contemporary Musical Theatre industry.





Award

BA (Hons)

UCAS code

W312

Duration

3 Years

**Entry requirements
for 2020 entry**

GCSE English Language and Mathematics at grade C/4 or above (or international equivalent), CCC at A Level and MMM at BTEC.

Entry is also subject to successful audition. Candidates who can demonstrate exceptional talent, and can satisfy the panel of their ability to complete the programme may also be considered.

A non-refundable audition fee will be charged.



“

I had the time of my life whilst doing my degree here. My experience was so smooth from start to finish and I didn't want the year to end! The faculty are at the top of their game in terms of teaching, experience, and qualifications. These staff inspired me and pushed me to achieve the very best result I could and I am thrilled with the outcome. I am looking forward to enrolling on the new distance learning Masters course! I can't thank GSA enough, as if it weren't for them, I wouldn't be thriving in my career as a teacher.

”

Rosie Parton

BBA (Hons) Theatre, 2017

BA (Hons) Theatre

(Conversion course via online learning)

Why GSA?

This unique conversion programme, delivered via online learning, provides experienced professionals and/or graduates from Federation of Drama Schools, CDET, Conservatoires UK and Trinity College London validated courses the opportunity to gain a degree from a leading conservatoire within a top University. Students will engage with critical concepts and explore the rich heritage of theatre and performance from an experiential and practical perspective.

Programme overview

This is primarily a one-year course, available for a two-year registration, and is equivalent to Year 3 (FHEQ Level 6) of full-time study.

Teaching and learning materials are delivered electronically via the University's Virtual Learning Environment, supported by three weekend seminars, held during September, February and April. These include core module presentations and

lectures from members of GSA staff, as well as an induction into the library and seminars on research strategies, academic writing, style and referencing.

Study and assessment comprises core modules and a choice of final project for submission, including essays or a choice of creative assignments working on playwriting, choreography, theatre design or a musical theatre scenario.





Award

BA (Hons)

Duration

1-2 Years

**Entry requirements
for 2020 entry**

GCSE English Language and Mathematics at grade C/4 or above (or international equivalent).

Prospective candidates are required to have successfully completed a three-year National Diploma at an accredited drama school or have significant industry experience and equivalent qualification.

The course is suitable for Federation of Drama Schools and CDET 3-year graduates or those holding a Trinity College London Level 5 or higher Professional Diploma as well as experienced industry practitioners and professionals.

BA (Hons) Theatre and Performance

Why GSA?

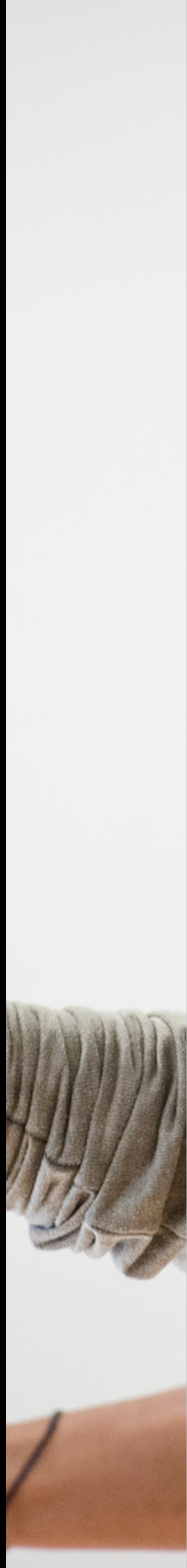
Our Theatre and Performance programme will provide you with extensive experience and in-depth knowledge of a wide range of practices, with a special emphasis on experimentation. Our students benefit from the University of Surrey's long-established reputation for theatre and dance research and position in GSA as a programme grounded in practical and theoretical enquiry.

Programme overview

Within the programme you will explore the ideas and practices that inform current theatre and performance making, both nationally and internationally. The programme is grounded in considerations of key historical landmarks, before widening out to consider a breadth of contemporary performance practices, theatre texts and events. Your studies will focus on artistic and cultural enquiry, theatre history, politics, ethics,

and performance analysis, alongside a pronounced spirit of experimentation, all informed by research, practice and reflection.

Through practice, analysis and debate, you will engage directly with the specialisms that shape theatre and performance in the present moment, allowing you to thrive in a range of professions linked directly to theatre, as well as the creative and cultural industries.





Award

BA (Hons)

UCAS code

W440

W441

Duration

3 Years

4 Years*

**Entry requirements
for 2020 entry**

GCSE English Language and Mathematics at grade C/4 or above (or international equivalent), ABB at A level or DDD at BTEC.

Offers are normally made in terms of grades. Suitable candidates will be invited for an audition and/or interview.

* Programme includes Professional Training placement

“

The course is just great practice for the real world. Having the name Guildford School of Acting attached to you really benefits you when you are going for jobs.

”

Roshan Conn

BA Theatre Production graduate

BA (Hons) Theatre Production

Why GSA?

This practice-based programme provides professional training in a wide range of production skills and at GSA we pride ourselves on producing graduates that are confident, creative and technically skilled with the ability and stamina to succeed in the contemporary creative industries.

Programme overview

On our Theatre Production programme you will work in close collaboration with fellow students at Guildford School of Acting to deliver a variety of productions within our modern, large and well-equipped Ivy Arts Centre theatre.

The programme introduces core subjects relating to professional theatre production. Your teaching builds experience in a range of skills including sound, lighting, stage management and scenic arts.

As you progress through the programme, you will be able to select one dedicated area for specialist development, eventually taking senior creative or production-critical responsibility across a range of public performances within the University and at external venues. An industry placement and professional development modules will also feature as a core part of your programme and you will have the opportunity to present your work at a final year London showcase event.



Award

BA (Hons)

UCAS code

W450

Duration

3 Years

**Entry requirements
for 2020 entry**

GCSE English Language and Mathematics at grade C/4 or above (or international equivalent).
CCC at A Level and MMM at BTEC.

Entry is also subject to successful interview. Candidates who can demonstrate exceptional talent, and can satisfy the panel of their ability to complete the programme may also be considered.

Postgraduate



MA Acting

Why GSA?

The MA Acting programme is specifically designed for those seeking a career in the performing arts. The programme places a strong emphasis on practical actor training, delivered via a series of project workshops and rehearsals supported by extensive classes in relevant technical skills.

Programme overview

We place a very strong emphasis on the practical acquisition of technical skills, and provide opportunities to combine these skills into musical theatre rehearsal projects and public performances, together with a dedicated focus on professional development.

The programme is intensive and specifically designed to equip participants in the 'triple-threat' disciplines of acting, singing, dancing.

Seminars in contextual and theoretical studies are taken together with masterclasses led by industry professionals in audition technique and repertoire. Project work integrates the skills including a devised project, a final public production led by a production team of industry professionals and a West End Showcase.

Award

MA

Duration

1 Year

Entry requirements for 2020 entry

Entry by audition. Students must hold a bachelor's degree in a relevant subject (minimum 2.2 or equivalent), as well as previous engagement with drama, theatre and performance. Offers are made subject to a successful audition and interview.

Applicants who can demonstrate exceptional talent, and can satisfy the panel of their ability to successfully complete the course, may also be considered. Variations will be considered on a case-by-case basis.



MFA Acting

Why GSA?

Our new and innovative MFA Acting will train future generations of internationally renowned performers and teachers.

Delivered by Guildford School of Acting (GSA), one of the most highly regarded theatre schools in the UK, this programme provides world-class actor training alongside a sterling reputation and excellent industry links.

Programme overview

Our new and innovative MFA Acting builds on the success of GSA's current postgraduate programme by extending the high-quality, intensive training currently offered on our one year MA Acting programme. The MFA Acting programme is highly selective and intensive: students train for four semesters over two years, taking classes in acting, voice, movement and professional development, exploring a wide range of theatre traditions and performance styles in rehearsal projects and public productions.

This unique programme is delivered by expert teachers with extensive first-hand experience in the professional theatre sector in both the UK and the US.

Our beautiful campus boasts strong transport links to London, meaning our students can easily benefit from GSA's proximity to the heart of UK theatre; London's West End. This means our students not only receive world-class training, but are also heavily exposed to London theatre, cultural activities and highly beneficial industry networks.

Award

MFA

Duration

2 years (4 semesters)

Entry requirements for 2020 entry

Entry by audition. Students must hold a bachelor's degree in a relevant subject (minimum 2.2 or equivalent), as well as significant engagement with drama, theatre and performance. Alternatively, entrants may have 5 years of relevant professional experience in the industry. Offers are made subject to a successful audition and interview.

In exceptional cases, where ability and experience clearly show that an applicant is able to complete the course, other qualification profiles may be accepted. Variations will be considered on a case-by-case basis.



MA Musical Theatre

Why GSA?

Successful entry on to this prestigious programme means you will be part of a carefully selected and committed ensemble of performers-in-training, equipped with the necessary self-discipline and motivation to master new skills and refine existing capabilities.

Programme overview

We place a very strong emphasis on the practical acquisition of technical skills, and provide opportunities to combine these skills into musical theatre rehearsal projects and public performances, together with a dedicated focus on professional development.

The programme is intensive and specifically designed to equip participants in the 'triple-threat' disciplines of acting, singing, dancing.

Seminars in contextual and theoretical studies are taken together with masterclasses led by industry professionals in audition technique and repertoire. Project work integrates the skills including a devised project, a final public production led by a production team of industry professionals and a West End Showcase.

“

GSA treats you like a family. If you enter GSA with an open mind and an open heart you will flourish as an artist. Trust in the teachers. Trust in the training. The entire experience is unlike anywhere else.

”

Roshan Conn

BA Theatre Production graduate

Award

MA

Duration

1 Year

Entry requirements for 2020 entry

Entry by audition. Students must hold a bachelor's degree in a relevant subject (minimum 2.2 or equivalent), as well as previous engagement with drama, theatre and performance. Offers are made subject to a successful audition and interview.

Applicants who can demonstrate exceptional talent, and can satisfy the panel of their ability to successfully complete the course, may also be considered. Variations will be considered on a case-by-case basis.



MFA Musical Theatre

Why GSA?

Guildford School of Acting (GSA) is arguably the foremost musical theatre school in the world and our new 2 year MFA programme in Musical Theatre provides students the very best conservatoire training within a top UK university environment. Building on the international reputation of our BA and MA Musical Theatre programmes this terminal degree in performance is unique in the market and the perfect platform for those looking to launch their professional career.

Programme overview

Offering world-class teaching and impressive industry links from one of the UK's leading conservatoires, MFA students will learn to employ a broad range of musical theatre knowledge and skills whilst delivering outstanding performances in a range of productions.

The programme also provides a working knowledge of historical, critical and theoretical content and the creation of a performance that will be presented to agents and professionals for maximum industry exposure.

As a student on the MFA programme you will also have the opportunity to participate in a professional placement production, giving you invaluable experience of the UK Musical Theatre industry.

An impressively high percentage of GSA alumni appear in the cast lists of West End shows and National tours and in 2015, over 95 per cent of GSA graduates gained professional representation or professional contracts within the first year of graduation.

Award

MFA

Duration

2 years

Entry requirements for 2020 entry

Entry by audition. Students must hold a bachelor's degree in a relevant subject (minimum 2.2 or equivalent), as well as significant engagement with drama, theatre and performance. Alternatively, entrants may have 5 years of relevant professional experience in the industry. Offers are made subject to a successful audition and interview.

In exceptional cases, where ability and experience clearly show that an applicant is able to complete the course, other qualification profiles may be accepted. Variations will be considered on a case-by-case basis.

MA Stage & Production Management

Why GSA?

Guildford School of Acting (GSA) has been providing highly regarded professional training in stage management for over 40 years and our graduates have gone on to work in all areas of the industry, both in the UK and across the globe.

This course will build on your existing knowledge and skills to increase your competence and confidence in stage and production management. After you graduate, you will be able to successfully launch a career in the theatre and entertainment industry.

Surrey is one of the UK's leading universities for drama, with our courses ranked 2nd in the UK in the *Guardian University Guide 2018*.

Programme overview

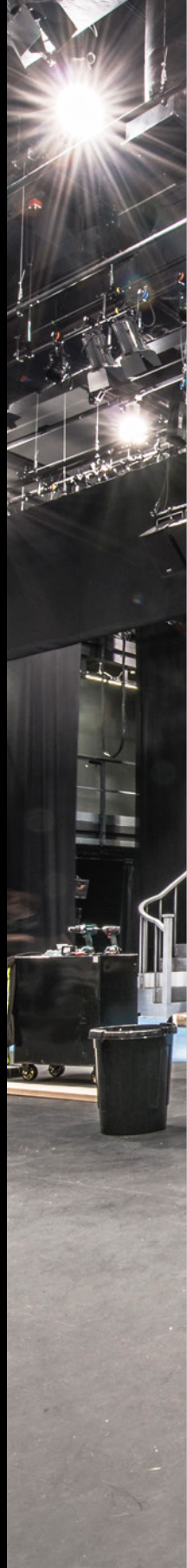
On this intensive practice-based masters course, you'll work in close collaboration with fellow GSA undergraduate and postgraduate students.

You'll begin the year with intensive seminars and workshops, which will introduce you to the stage management and technical disciplines, and begin your professional development planning.

You'll then start working on our wide range of production projects, taking place in both our dedicated campus performance venues as well as external venues. You will have the opportunity

to take on senior production-critical roles as deputy stage manager, stage manager or production manager on our public productions, all under the guidance of our experienced and industry-connected professional staff. You will also have the opportunity to complete an industry placement.

Your professional development planning will culminate in presenting your work at a London showcase event. To complete the year you will create a portfolio reflecting on your emergence as a professional practitioner.





Award

MA

Duration

1 Year

Start date

September 2019

**Entry requirements
for 2020 entry**

Bachelor's degree (minimum 2:2 or equivalent) in a relevant field, as well as previous engagement with theatre & performance/wider entertainment industry.

Offers are made in terms of grades and a successful interview. Applicants who can demonstrate exceptional talent, and can satisfy the panel of their ability to complete the programme may also be considered.

**English language
requirements**

IELTS Academic: 6.5 overall, 6.0 in each component (or equivalent).

We offer intensive English language pre-sessional courses, designed to take you to the level of English ability and skill required for your studies here.

MA Theatre

Why GSA?

Our MA Theatre course from world-class conservatoire Guildford School of Acting is professionally accredited by the Federation of Drama Schools, and offers you the unique opportunity to complete a masters degree through online learning. This flexible approach means that you can pursue your passion for theatre and develop your industry connections around your existing personal and professional commitments.

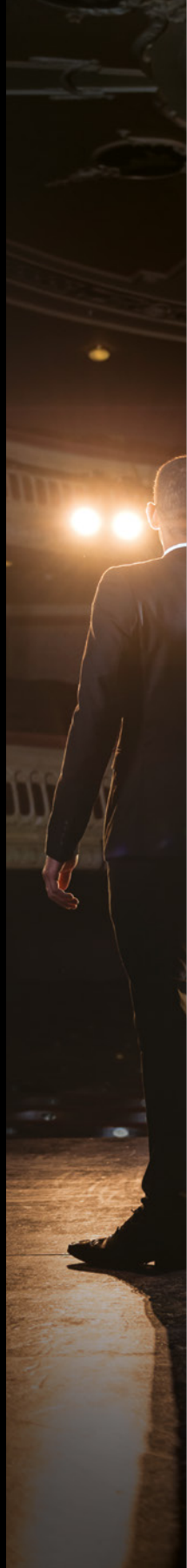
You'll have unlimited access to our virtual learning environment and will be supported by industry-leading professionals and passionate academics from within GSA. Our graduates can be found in most West End shows and you'll benefit from our long-standing reputation and distinctive heritage in theatre, giving you an edge in this fast-paced industry.

Programme overview

Our MA Theatre course lets you study towards a masters degree in theatre at your own pace through online learning.

You'll be able to actively engage with relevant concepts and explore the rich heritage of theatre from a critical and theoretical perspective. You'll gain an understanding of theatrical practices and develop your ability to evaluate significant historical, political, social and ethical developments in theatre.

The broad range of modules incorporates relevant topics such as Theories of Performance, Contemporary Theatre Making, Political Theatre, Shakespeare in Performance, and Musical Theatre. You'll also take on an independent research project that will allow you to specialise in an area of particular interest to you.





Award

MA

Duration

2 Years

Start date

October 2019

**Entry requirements
for 2020 entry**

Students must hold a bachelor's degree in a relevant subject (minimum 2.2 or equivalent), as well as previous engagement with drama, theatre and performance. Offers are made subject to a successful application.

**English language
requirements**

IELTS 6.5 overall, 6.0 in each component (or equivalent)

We offer intensive English language pre-sessional courses, designed to take you to the level of English ability and skill required for your studies here.

Student focus



Darragh Cowley

BA (Hons) Musical Theatre, 2018

I am currently playing *Melchior Gabor* in *Spring Awakening* at the Hope Mill Theatre.

I was fortunate enough to be in the position to choose between a few schools that had offered me a place. Not only did I realise that GSA offered world class training, but out of the schools I had to choose from I felt most comfortable there. From the minor details such as campus living, to the more important things like the atmosphere of the school and it' students. My favourite thing about training at GSA was the amount of things to do outside the classroom. In my second year I had a ball singing here there and everywhere with the GSA Singers. My personal favourite however was going to Sweden with the European Musical Theatre Network. A select group of students from four schools from over Europe would come together twice a year and take part in workshopping a show. I worked with

them both in Guildford and in Göthenburg and I couldn't have asked for a more eye opening experience of how theatre is done over the continent.

If I could offer the hopeful auditionees at GSA only one tip for the future, sun screen would be it. No, it would be to never try and be something that you're not. There's so much talent running around the building that it's easy to forget that you should be aiming for the best version of you, and you are totally enough. It doesn't take much to slip into a mindset that tries to compete with other people's talents rather than nurturing your own. It will only hold you back in the long run. Don't panic about not enjoying yourself, don't panic about not being good enough, don't panic that you didn't understand something everyone else seems to get. Work hard and the rest will come!



Jodie Sam Steele

BA (Hons) Musical Theatre, 2013

I have played Elphaba in the *Wicked International Tour* and I am currently appearing as Heather Chandler in *Heathers* at the London Palladium

As soon as I came to GSA to audition I felt so comfortable.... it felt homely somehow and I just knew I would reach my highest potential there from the workshop classes I experienced when auditioning. It was the place I felt I would grow and learn the most. My favourite thing about training at GSA was the family I made within my year group which I will have forever!

I have been so lucky, but also worked tirelessly day and night since I graduated to make money to live and to build myself as a business and to be someone respected for my craft within the industry. I have played some incredible roles, travelled places I never thought I would and had experiences I never even dreamed of. The blood, sweat and tears are all worth it.... and they will all be worth it still when I'm back working my day job between performing jobs... that's show business kids!



Michael Fox

BA (Hons) Theatre Production, 2018

I am currently a Freelance Lighting Programmer with current projects including British Youth Opera, Inspector Calls UK Tour & Gandey's Circus Greatest Showman UK Tour. I decided to choose lighting because I have always had an interest in technology. For me, lighting was a great middle ground for my interest in technology and my passion for performance and music.

I chose GSA because of the experience they offered from working on a large quantity of shows that were of a range of genres and sizes throughout your time there. My favourite part of the programme would be

the opportunities it presents through the freelance professionals you work alongside and the placements you take throughout the year, allowing you to build a pool of contacts for when you graduate and start work.

The advice I would give anyone wanting to work in theatre production would be to balance knowing as much as you can and knowing the most people. I was able to learn very quickly that there is no use knowing everything if you know no-one to work with; and no use knowing everyone if you don't know how to do anything.



Eilidh Loan

BA (Hons) Acting, 2018

I chose GSA because I wanted to be at a drama school where I could spend my three years growing and developing my skills as an actor and learning from professionals in the industry, but also somewhere I would enjoy spending my three years. GSA gave me that.

I chose acting as I love telling stories and I have done since I was little. I am passionate about our industry because I strongly believe actors have the ability to tell powerful stories that can have an impact on others. The programme at GSA covers everything. From Greek Tragedies to TV and Film.

The staff members at GSA are truly inspiring. They really do care about their job and their students. They have a passion to get the best out of each person. I have been lucky enough to work with directors at GSA who have gone above and beyond for their students. The Facilities at GSA are great. We are very lucky to have our own building with different studios and practice rooms. We also have a café in the building. The campus itself is fantastic. There are shops, the library and also a really lovely lake to relax when it's sunny.

The connections and friendships I have made with the students and members of staff are memories I will carry with me forever. It has been an unforgettable experience. I feel very grateful to have met these people and gone through this experience with them all.

In my second year at GSA, I set up a short film company with some of my close friends on the course. This has been extremely useful to us as we begin our professional work, however, the film company is something we are continuing after we leave. It allows us to access other skills such as directing, writing and producing. I am very grateful that GSA let us kick start this.

I think it is so important that we keep pushing boundaries in our industry. Now that I've graduated I want to create work that makes people listen and makes change. This is such an exciting time to be an actor and I'm ready to keep working hard and tell some brilliant stories in what I hope will become a more diverse, equal industry.

Traditional and practice-based research

As a university conservatoire, we benefit from a close relationship between scholarship, performer training and professional practice. Our innovative research centres include the Centre for Performance Philosophy, the Centre for Performance and Urban Living, the Surrey Shakespeare Centre and the Labanarium.

Research

Our research, which encompasses both traditional and practice-based forms, addresses performance in history and contemporary culture. It ranges from performance philosophy to global Shakespeare, and includes work in transnationalism and dance; immersive, interactive and durational theatres; trauma and crisis in performance; disability arts; performance and the nonhuman, and costume and scenography. As a university conservatoire, we benefit from a close relationship between scholarship, performer training and professional practice. GSA is also home to the Centre for Performance Philosophy, Surrey Shakespeare Society, Centre for Performance and Urban Living and Labanarium that foster innovative and creative research.

PhD researchers on all programmes in GSA can expect three levels of research training and support:

- University-level training is provided by the Researcher Development Programme and the University Library, including a PhD induction, workshops on writing skills and preparation for the confirmation and viva. There is also an annual student-led University Postgraduate conference.
- School-level training is offered in the form of interdisciplinary seminars, reading groups, visiting speaker events and conferences. This includes our annual Practice Research Festival as well as the events aligned with the Centre for Performance Philosophy.
- PhD researchers will receive subject-specific training through regular reading groups or research seminars. We host PhD researcher presentations that allow you to share and develop ideas in a supportive environment.

“

My supervisors are enthusiastic. They care about my development as a scholar and are ambitious for the field of research. They excite my critical thinking, and have always offered professional guidance when needed.

”

Michelle Man
PhD Dance

PhD Dance

Our research programme in Dance prepares you for success at each stage of your PhD project development. The structure is designed to provide intensive graduate preparation for a future career and is suitable for either part-time or full-time candidates. Completion of the programme entails submission of a thesis, the submission of practice if undertaking a practice-based PhD, and an oral viva with external examiners.

Selected areas of staff research include but are not limited to:

- African, Afro-Cuban and Latin/o dance
- Contemporary dance and dance theatre
- Costume and costuming
- Dance ethnography
- Dance on screen and new media
- Dance scenography
- Choreography
- Kinaesthesia, proprioception and kinaesthetic empathy
- Performance Philosophy
- Postcolonial theory
- Trauma, crisis and performance
- Theories of space, place and performance

PhD Theatre

Theatre at Surrey provides postgraduate researchers with a supportive and collegiate research experience within our conservatoire, the Guildford School of Acting (GSA).

Our research-active staff are known for the quality of their research, which includes undertaking leading roles within national and international research organisations

Selected areas of staff research include but are not limited to:

- Aesthetics, ethics and politics of participation
- Audience immersion
- Dramaturgy, directing and devising
- Costume and costuming
- Intermediality, the digital humanities and performance
- Live Art and contemporary performance practices
- Performance Philosophy, especially Deleuzian and phenomenological approaches
- Performing Shakespeare
- Performer training
- Theories of space, place and performance
- Trauma, crisis and performance
- Scenography, architecture and material cultures

Typical entry requirements

For all our research degrees, entry is on the basis of a good honours degree and usually an MA in a relevant arts subject or appropriate professional experience.

Candidates submitting proposals that include practice-based research will be required to evidence appropriate experience and expertise in the relevant area of practice.

“

It has been great to find in Surrey not only a rich and diverse research culture but also such a friendly, supportive and motivating environment.

”

Yaron Shyldkrot
PhD Theatre



Short Courses at GSA





Pre-audition courses

Our pre-audition courses offer students hoping to gain entry in to drama school invaluable experience and advice.

We offer two pathways on this 2 day intensive weekend course: Musical Theatre audition technique and Acting audition technique. The Musical Theatre pathway focuses on audition techniques and integrated skills within Acting, Singing and Dance whilst the Acting pathway places emphasis on Acting technique, Voice and Movement.

Please note this course is not solely for preparation for GSA auditions but for any drama school.

Is it for me?

If you are serious and determined to pursue a career in the performing arts industry and want an insight into drama school audition days this is the course for you. Our aim is to offer experience through mock auditions, intensive technical workshops and how

to prepare for auditions. Guidance will be given on your audition material, how to present yourself and any areas you may need to develop further in order to give you the best possible chance of success.

Find out more about entry requirements, fees and course dates on the GSA website: gsauk.org



GSA Saturday School

The GSA Saturday School provides professional training to students from the age of 5 to 17. Students have the opportunity to take classes in Musical Theatre, Acting, Singing and Dance, as well as one-to-one tutorials, at our purpose-built studio facilities located on the Stag Hill Campus at the University of Surrey in Guildford.

Sessions take place between 9.30 and 5.30 every Saturday during a ten week term. There are three terms per year, coinciding with the academic year. We provide classes for complete beginners right through to the very experienced. Parents have the option to join classes at an end of term 'watching week' to provide them with a chance to see how their children have progressed. We aim to develop confident, disciplined and happy students through conservatoire standard training.

Our Saturday School classes include:

- Introduction to Musical Theatre (5-7 years only)
- Acting
- Ballet
- Group singing
- Jazz
- Tap
- Musical theatre styles
- Street dance
- Private singing & acting tutorials
- Adult classes in acting, singing and dancing

GSA Summer Conservatoire

GSA has been successfully running summer schools for over 20 years and has built an international reputation for delivering world-class training. Our Acting and Musical Theatre Summer Conservatoire programmes are focused upon providing students that are interested in a career in the arts an insight into life within a conservatoire and the rigours and expectations of conservatoire training.

Our courses are taught by GSA conservatoire tutors and cover acting, singing, dance and movement. The Summer Conservatoire takes place at our purpose built facilities which are located on the Stag Hill Campus at the University of Surrey in Guildford. We offer accommodation to students joining us from the UK or abroad aged 17+.

We will be introducing a new range of courses to include acting, acting for camera, Shakespeare, Stage management and Musical Theatre.

Find out more about entry requirements, fees and course dates on the GSA website: gsauk.org

Stage Combat

This 5 day stage combat course delivers to students the Academy of Performance's (A.P.C.'s) Basic, Intermediate and Advanced Unarmed Syllabus Course.

Is it for me?

This course is designed for people with no experience or for those who are looking to gain more qualifications or simply to get back into doing stage combat.

- Basic: for those who have not done any stage combat or do not hold any stage qualifications
- Intermediate: for those who hold a Basic qualification or higher (you have a choice of either the Basic or Intermediate course depending on how you wish to approach the subject and what you are looking for)
- Advanced: for those who hold Intermediate or higher

Vocal Confidence

In business we all need to communicate and get our message across with clarity and impact. Actors face a similar challenge to deliver their story with feeling and belief to their audience.

At GSA we believe that the voice and presentation training which we provide for our students, many of whom go on to successful careers in both stage and screen, is equally relevant in a business setting. Learning and practicing the techniques used by actors as part of this one day course will help you to build confidence and success in all aspects of communication.

The Course Director is Chris Palmer, Head of Voice at GSA. Chris has worked with the World Economic Forum in Geneva, the Head Buyer for Harrods, Female Clergy, Teachers, Politicians, Councillors, Mayors and public speakers of all kinds.

- Insight into reading body language
- Posture: how confident do you appear
- Breath and pitch:
helping your voice carry and keeping your audience focussed on what you are saying
- How to control nerves

Find out more about entry requirements, fees and course dates on the GSA website: gsauk.org





“

I can't recommend GSA highly enough. Not only does the school have the finest teaching skills in all aspects of the performing arts, both technical and creative, they also teach an excellent work ethic promoting camaraderie, conscientiousness, confidence and generosity. Any student would benefit from this education to prepare them for whatever job they seek, in whatever field. I benefited enormously from attending GSA in the mid 70s. They transformed me from a little pipsqueak into an employable professional actress.

The teaching standard was great then but it is now far superior. The ensuing years have seen GSA go from strength to strength, culminating in their fabulous new state of the art premises on the campus of the University of Surrey. The standard of education is superb.

”

Brenda Blethyn OBE

Disclaimer

The information in this prospectus is intended as an indicative guide to the educational and other services provided by the University of Surrey and GSA. The University of Surrey and GSA endeavour to ensure that the information provided is accurate and up-to-date at the time of going to press (Jan 17).

However, it may be necessary for the University to make changes to some of the information presented in it. To make an informed decision about whether you wish to study at GSA we advise you to consult the GSA website for up-to-date information.

The University is a charitable and not-for-profit organisation and the work we do is of public good. Research is taking place at Surrey right now which addresses the most pressing issues faced by our society. We are also training and educating young people, changing students' lives and supporting and developing the local and wider economy (HMRC reference number X3967).





A

B

C

D

Stag Hill Campus



Alresford Road

Cathedral

Cathedral Close

Campus Entrance

P Guildford Park

Guildford Railway Station

Campus Entrance

Town Centre via Walnut Tree Close

Yorkies Bridge

P Contractors

Key

- Bus Stop
- Bus Route
- Cycle Park
- Information Point
- Cash Point
- Development Area

Café/Restaurant Stag Hill Campus

- Hillside Restaurant
- Starbucks – Oak House
- Lakeside Restaurant
- Lakeside Coffee Shop
- SimplyFresh store
- Wates House
- TheATre – GSA

Accommodation Stag Hill Campus

- Battersea Court
- Cathedral Court
- Guildford Court
- International House
- Millennium House
- Stag Hill Court
- Surrey Court
- Twyford Court
- University Court

P Main Car Park

A

B

C

D

1

2

3

4

5

6



A3
A31 (M3)
Portsmouth
 Manor Park Campus



Dorothy Hodgkin Building [AY]	12
Duke of Kent Building [DK]	7
Edward Jenner Building [AX]	10
Elizabeth Fry Building [AD]	32
Engineering For Health Building [Under Construction]	42
Estates & Facilities Management [EFM]	47
Frank Whittle Building [AB]	25
GSA (Guildford School of Acting) [GSA]	52
Health Centre [HC]	4
Ivy Arts Centre [IAC]	51
James Clerk Maxwell Building [CII]	45
James Joule Building [BC]	30
Joseph Lister Building [AW]	9
Lake	8
Lecture Theatre Block [LT]	26
Lewis Elton Gallery	33
Lewis Carroll Building [AC]	29
Library and Learning Centre [LLC]	28
Nodus Centre [NC]	50
Oak Suite (Oak House) [OAK]	13
PATS Field	41
Performing Arts Technology Studio [PATS]	40
Philip Marchant Building [PM]	19
Quiet Centre [QC]	36
Rik Medlik Building [MS]	22
Robert Boyle Building [AZ]	14
Senate House [SE]	18
Student Services Centre [SSC]	17
Students' Union [SU]	11
Teaching Block [TB]	38
Thomas Telford Building [AA]	20
University Hall [HA]	16
Wates House [WA]	34
Yorkies Bridge	1

Key buildings/areas [Building Code]

Alan Turing Building [BB]	24
AQA (Assessment & Qualifications Alliance) [AQA]	31
Arthur C Clarke Building [BA]	21
Austin Pearce Building [AP]	23
BBC Building [BBC]	39
Cathedral	35
Central Distribution [CD]	48
Centre for Wellbeing [SCS]	6
Daphne Jackson Building [ATI]	49


P Pay & Display

P AQA Only

Guildford School of Acting
Stag Hill Campus
Guildford, Surrey
GU2 7XH, UK

W: gsauk.org

 twitter.com/the_gsa

 facebook.com/gsauk

E: gsaenquiries@gsa.surrey.ac.uk

T: +44 (0)1483 684040

GSA
est. 1935

UNIVERSITY OF SURREY